

Demo Case

Ordering Code: DEMO.C-DIM.PH.DA.V1

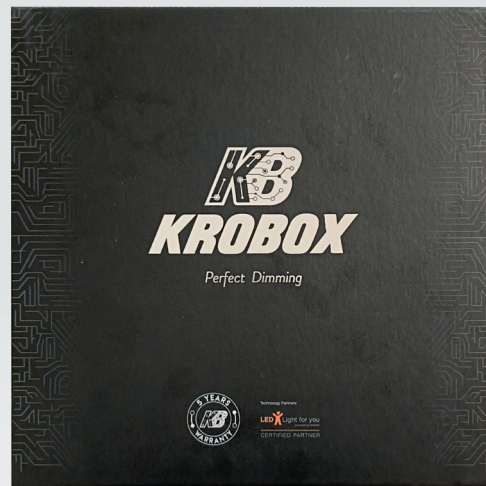
Size: 220mm x 220mm x 70mm

Weight: ~692g

DALI & PHASE

DIMMING CONTROLS

Controls for both DALI and phase dimming protocols that can be used in conjunction with the Modules Demo Case. It contains a preconfigured DALI DT8 push button switch for brightness and colour temperature adjustment, and a push-rotary trailing edge dimmer for brightness adjustment.



Compatible LED Module



Module Colour Temperature Variation



Driver Dimming Variation

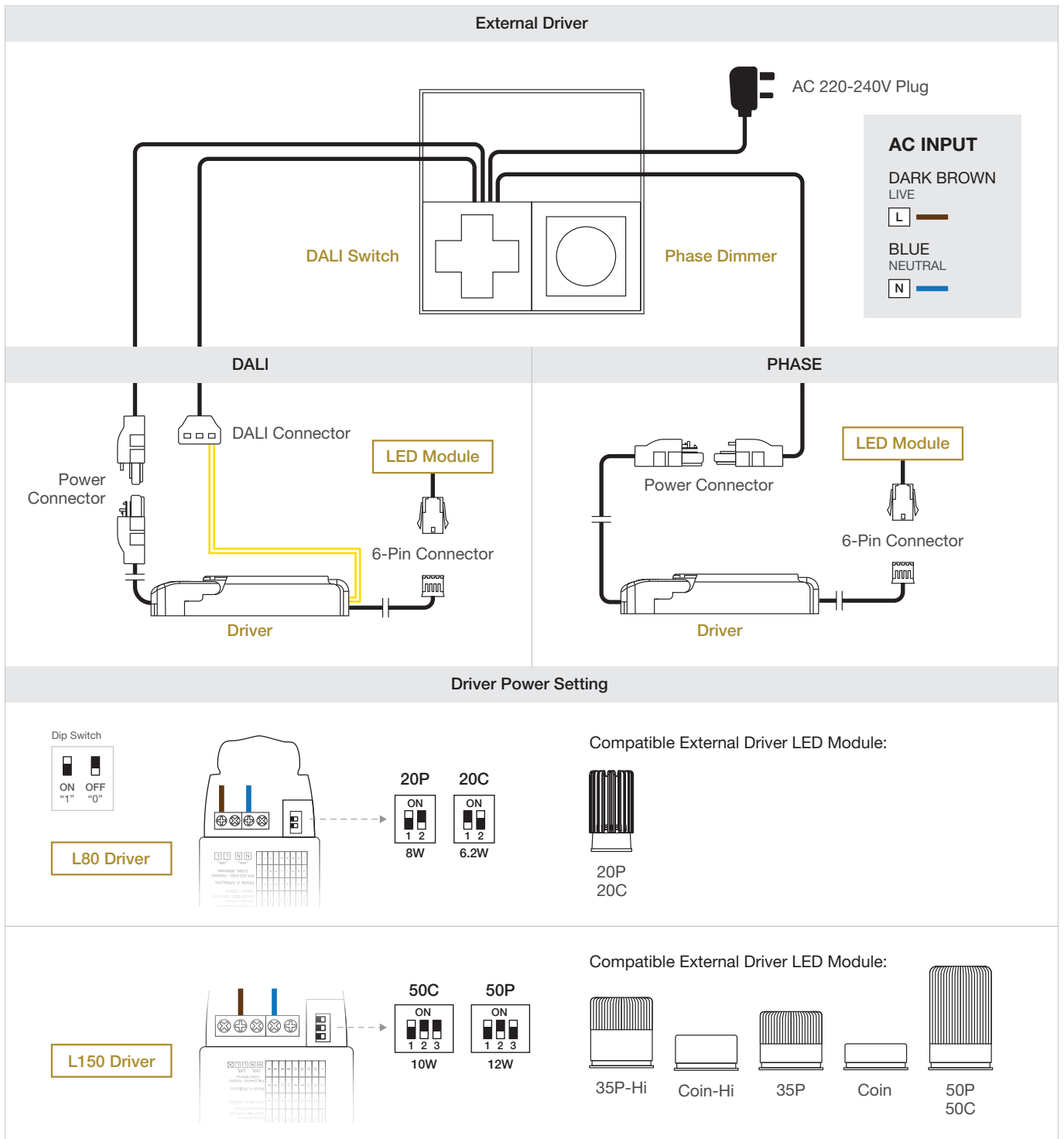


DALI & PHASE DEMO CASE

DIMMING CONTROLS



CONNECTION DIAGRAM



CONNECTION DIAGRAM

