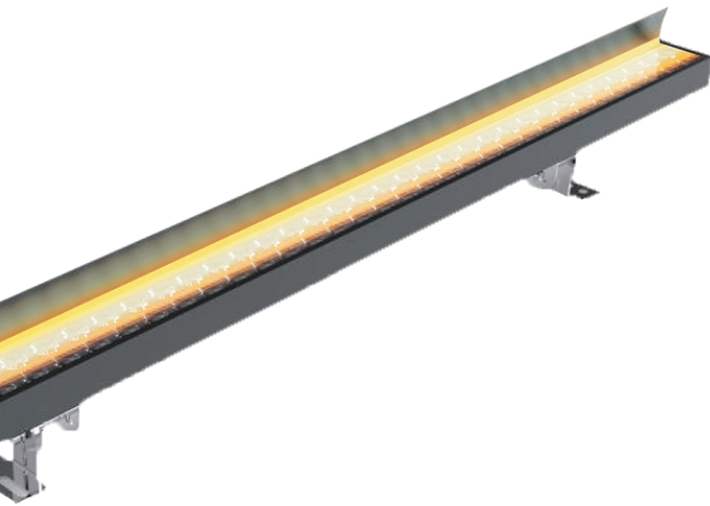




# WL59G **IP66 IK06** LINEAR GRAZER LUMINAIRE



Profile Type	60mm width 6063 aluminium linear profile
Profile Finishing	Powder coating
Cover	Clear
Light Uniformity	-
Mounting	Adjustable mounting bracket
Compatible LED Module	- (non modular)
CRI	High Efficiency (CRI~80)
SDCM	3 step MacAdam ellipse binning
Lifetime	Up to 50,000 hours L80 lamp life at Ta = 25°C
Voltage	220-240V AC
Maximum Power	100W/m
Length Options	300mm, 500mm, 1000mm
Operating Temperature	Ta (min) = -35°C, Ta (max) = +60°C
Wire Connection	Supplied with insulated IP65 wires and connector at 150mm length
IP Rating	IP66
IK Rating	IK06
Profile LOR	-

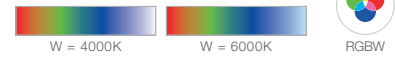
### AVAILABLE OPTIONS

#### CCT OPTIONS

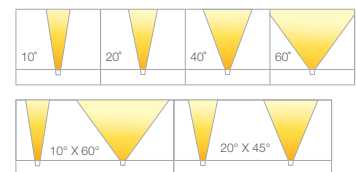
##### SINGLE CCT



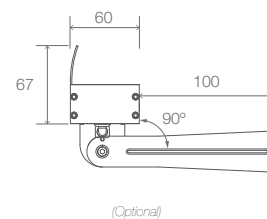
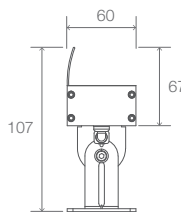
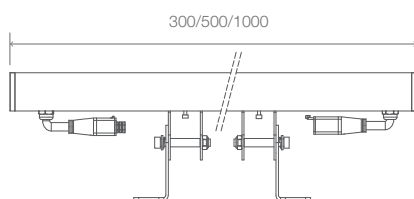
##### RGBW



#### BEAM ANGLES



### DIMENSIONS (MM)





## FACADE LIGHTING

### PRODUCT SPECIFICATIONS

Model	WL59G LINEAR GRAZER LUMINAIRE		
Cut Length	300mm	500mm	1000mm
Light Source	White LED, RGBW		
Colour Temperatures	White 2700K, 3000K, 3500K, 4000K, 5000K, RGBW(4000K), RGBW(6000K)		
LED Quantity	9pcs	18pcs	36pcs
Luminous Flux	White 3000K: 2550 lm (60°)	White 3000K: 4250 lm (60°)	White 3000K: 8500 lm (60°)
Efficacy	White 3000K: 85 lm/W (full on 60°)		
Beam Angles	10° / 20° / 40° / 60° / 10° x 60° / 20° x 45°		
Lens	Glass		
Housing	Aluminium		
Housing Finish Options	Matt Grey (RAL7001), Matt Black (RAL9011)		
Adjustment Options	0 to +90°		
Mounting	Adjustable Mounting Bracket		
Dimensions (L x W x H, Mounting Bracket included)	300mm x 60mm x 142mm	500mm x 60mm x 142mm	1000mm x 60mm x 142mm
Weight	0.9kg	1.3kg	2.5kg
Regulatory Listing & Safety Approval	CE		
Operating Temperature	-30°C to +50°C		
Minimum Starting Temperature	-20°C		
Environment	Outdoor, IP66, IK06, Coastal Environment (ASTM B117-16)		
Humidity	85%, non-condensing		

### ELECTRICAL SPECIFICATIONS

Input Voltage	220-240V AC		
	100W per meter		
System Power	33W	50W	100W
LED Power	26.4W	40W	80W
Lumen Maintenance	L80 50000hrs @ 25°C		

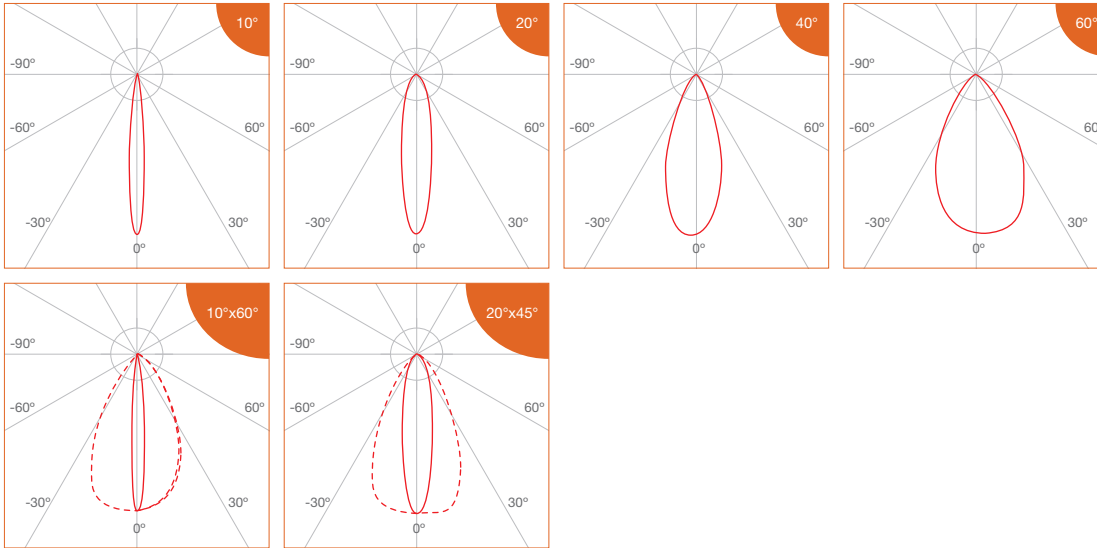
### SYSTEM SPECIFICATIONS

Power Supply	CE market: LED Engine 24V
	ETL market: LED Engine 24V (Class 2)
Control	On / Off, DMX512



## FACADE LIGHTING

### PHOTOMETRICS



### SPECIFICATIONS

- Single CCT

CCT	Efficacy (lm/W)	Luminous Flux per meter (lm/m)
		100W/m
2700K	85.0	8500
3000K		
3500K		
4000K	89.3	8925
5000K		

- RGBW

CCT	Efficacy (lm/W)	Luminous Flux per meter (lm/m)	RGB Wavelength (nm) / White CCT
		100W/m	
Red	481.3	972	620 - 630
		(@4.03W)	
Green	732.1	2094	515 - 525
		(@5.71W)	
Blue	195.5	559	460 - 470
		(@5.71W)	
White	1141.6	4875	4000K 6000K
		(@8.54W)	



## FACADE LIGHTING

### ORDERING MATRIX

Profile	Input Voltage		Finishing		Cover		Beam Angle		Length		Accessories			
<b>WL59G</b>	<b>AC</b>	220-240V AC	<b>GR</b>	Matt Grey	<b>C</b>	Clear	<b>10</b>	10°	<b>300</b>	300mm	<b>N</b>	None		
			<b>MB</b>	Matt Black			<b>20</b>	20°			<b>500</b>	500mm	<b>AGB</b>	Anti-glare Baffle
							<b>40</b>	40°			<b>1000</b>	1000mm	<b>AGL</b>	Anti-glare Louvre
							<b>60</b>	60°					<b>AGM</b>	Micro Louvre
							<b>10X60</b>	10° x 60°						
							<b>20X45</b>	20° x 45°						

LED Module Power & CCT				Ingress Protection		Control		
<b>Single CCT</b>	<b>100</b>	100W/m	<b>27</b>	2700K	<b>IP66</b>	IP66	<b>ND</b>	On/Off
			<b>30</b>	3000K			<b>DMX</b>	DMX512
			<b>35</b>	3500K				
			<b>40</b>	4000K				
			<b>50</b>	5000K				
<b>RGBW</b>			<b>RGBW40</b>	RGBW (4000K)				
			<b>RGBW60</b>	RGBW (6000K)				

Example: WL59G-AC-GR-C-20-1000-AGB-100-**RGBW40**-IP66-DMX  
 WL59 Grazer Profile, 220-240V AC, Matt Grey, Clear cover, 20°, 1000mm, Anti-glare Baffle, 100W/m, RGBW(4000K), IP66, DMX512



# LINEAR PROFILE AND ACCESSORIES

(Ordering Matrix for Separate Orders)

## • Terminal Cable

Power supply or signal for male/female terminal of lighting fixture with controller

Type	Number of Cores		Length	
WL-C	2P	2 poles (On/Off)	220	220mm
	5P	5 poles (TW/RGBW/DMX)	1000	1000mm

example: WL-C.5P.1000

## • Inter-connector Cable

Used in power supply or signal jumper connection for lighting fixture

Type	Number of Cores		Length	
WL-IC	2P	2 poles (On/Off)	1000	1000mm
	5P	5 poles (TW/RGBW/DMX)		

example: WL-IC.5P.1000

## • T-connection Cable

Cable used in intermediate power supply for lighting fixture with controller

Type	Number of Cores		Length	
WL-TC	2P	2 poles (On/Off)	300	300mm
	5P	5 poles (TW/RGBW/DMX)	600	600mm

example: WL-TC.5P.600

## • Termination End Cap

Cable used in intermediate power supply for lighting fixture with controller

Type	Number of Cores	
WL-EC	2P	2 poles (On/Off)
	5P	5 poles (TW/RGBW/DMX)

example: WL-EC.5P