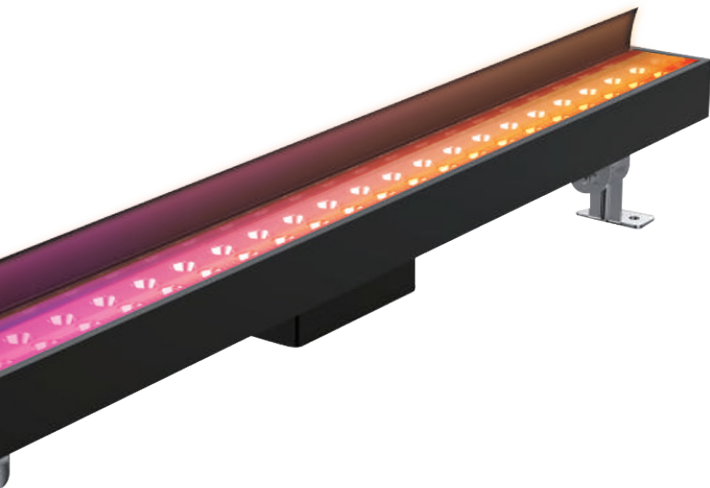




# WL75G

LINEAR GRAZER MEDIA LUMINAIRE



Profile Type	60mm width 6063 aluminium linear profile
Profile Finishing	Powder coating
Cover	Clear
Light Uniformity	-
Mounting	Adjustable mounting bracket
Compatible LED Module	- (non modular)
CRI	High Efficiency (CRI~80)
SDCM	3 step MacAdam ellipse binning
Lifetime	Up to 50,000 hours L80 lamp life at Ta = 25°C
Voltage	220-240V AC
Maximum Power	100W/m
Length Options	300mm, 500mm, 1000mm
Operating Temperature	Ta (min) = -35°C, Ta (max) = +60°C
Wire Connection	Supplied with insulated IP65 wires and connector at 150mm length
IP Rating	IP66
IK Rating	IK06
Profile LOR	-
<b>Media Specifications</b>	
Pixel Density	8 Pixel per meter
Control Method	DMX 512 - Pixel by Pixel
Cut per Stretch	300mm (1 pixel), 500mm (4 pixels), 1000mm (8 pixels)

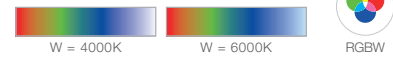
### AVAILABLE OPTIONS

#### CCT OPTIONS

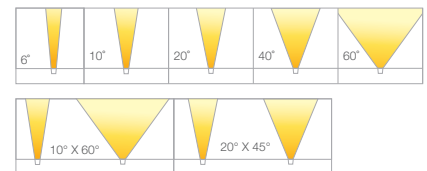
##### SINGLE CCT



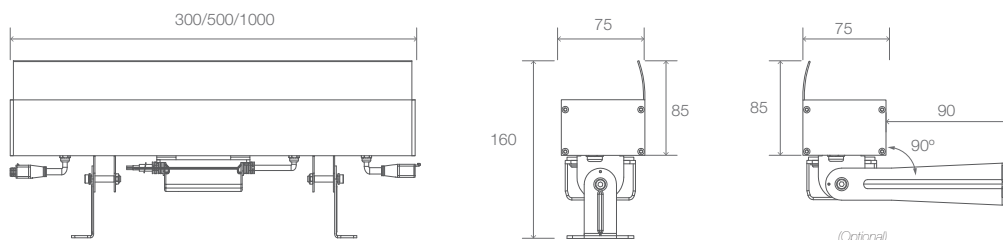
##### RGBW



#### BEAM ANGLES



### DIMENSIONS (MM)





## FACADE LIGHTING

### PRODUCT SPECIFICATIONS

Model	WL75G LINEAR GRAZER MEDIA LUMINAIRE		
Cut Length	300mm	500mm	1000mm
Light Source	White LED, RGBW		
Colour Temperatures	White 2700K, 3000K, 3500K, 4000K, 5000K, RGBW(4000K), RGBW(6000K)		
LED Quantity	10pcs	20pcs	40pcs
Luminous Flux	White 3000K: 2440 lm (60°)	White 3000K: 4000 lm (60°)	White 3000K: 8000 lm (60°)
Pixel Options	1 pixels	1, 4 pixels	1, 4, 6, 8 pixels
Efficacy	White 3000K: 80 lm/W (full on 60°)		
Beam Angles	6° / 10° / 20° / 40° / 60° / 10° x 60° / 20° x 45°		
Lens	Glass		
Housing	Aluminium		
Housing Finish Options	Matt Grey (RAL7001), Matt Black (RAL9011)		
Adjustment Options	0 to +90°		
Mounting	Adjustable Mounting Bracket		
Dimensions (L x W x H, Mounting Bracket included)	300mm x 75mm x 159.5mm	500mm x 75mm x 159.5mm	1000mm x 75mm x 159.5mm
Weight	1.7kg	2.5kg	4.8kg
Regulatory Listing & Safety Approval	CE		
Operating Temperature	-30°C to +50°C		
Minimum Starting Temperature	-20°C		
Environment	Outdoor, IP66, IK06, Coastal Environment (ASTM B117-16)		
Humidity	85%, non-condensing		

### ELECTRICAL SPECIFICATIONS

Input Voltage	220-240V AC		
	100W per meter		
System Power	33W	50W	100W
LED Power	26.4W	40W	80W
Lumen Maintenance	L80 50000hrs @ 25°C		

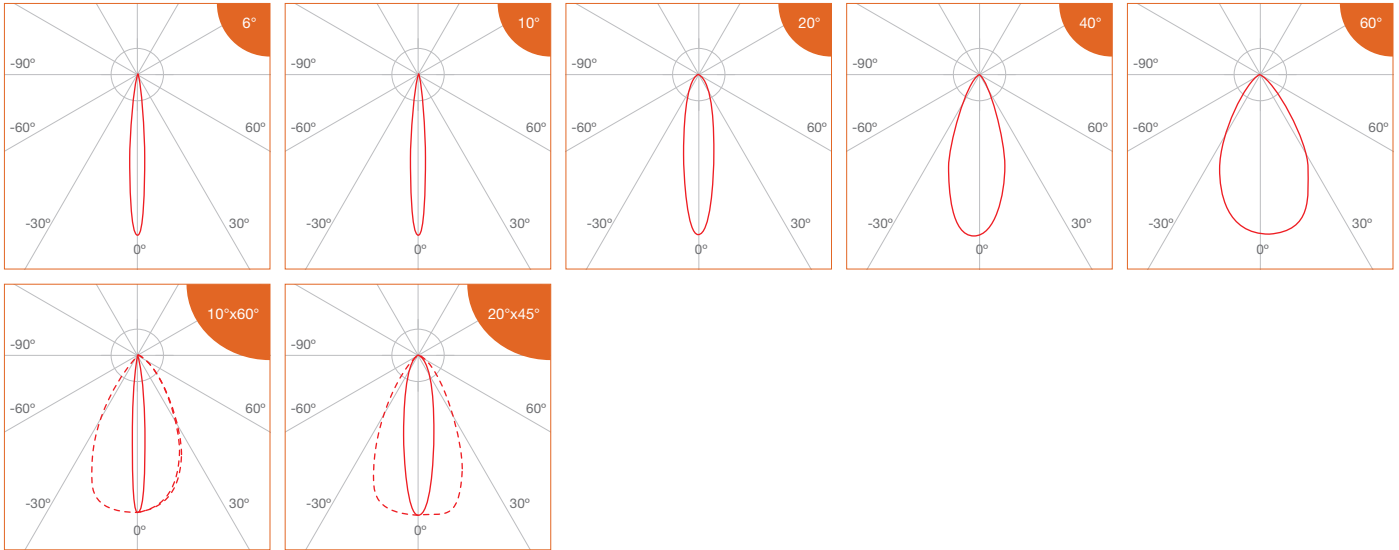
### SYSTEM SPECIFICATIONS

Power Supply	CE market: LED Engine 24V
	ETL market: LED Engine 24V (Class 2)
Control	On / Off, DMX512



## FACADE LIGHTING

### PHOTOMETRICS



### SPECIFICATIONS

#### • Single CCT

CCT	Efficacy (lm/W)	Luminous Flux per meter (lm/m)
		100W/m
2700K	80.0	8000
3000K		
3500K		
4000K	84.0	8400
5000K		

#### • RGBW

CCT	Efficacy (lm/W)	Luminous Flux per meter (lm/m)	RGB Wavelength (nm) / White CCT
		100W/m	
Red	453.0	915 (@4.03W)	620 - 630
Green	689.0	1971 (@5.71W)	515 - 525
Blue	184.0	526 (@5.71W)	460 - 470
White	1074.5	4588 (@8.54W)	4000K 6000K



## FACADE LIGHTING

### ORDERING MATRIX

Profile	Input Voltage		Finishing		Cover		Beam Angle		Length		Pixel Options		Accessories	
	AC	220-240V AC	GR	Matt Grey	C	Clear	6	6°	300	300mm	1P	1 Pixel	N	None
WL75G			MB	Matt Black			10	10°	500	500mm	1P	1 Pixel	AGB	Anti-glare Baffle
							20	20°			4P	4 Pixels		AGL
			40	40°			1000	1000mm	1P	1 Pixel	AGM	Micro Louvre		
			60	60°					4P	4 Pixels				
			10X60	10° x 60°					6P	6 Pixels				
			20X45	20° x 45°			8P	8 Pixels						

LED Module Power & CCT				Ingress Protection		Control		
Single CCT	100	100W/m	27	2700K	IP66	IP66	ND	On/Off
			30	3000K			DMX	DMX512
			35	3500K				
			40	4000K				
			50	5000K				
RGBW			RGBW40	RGBW (4000K)				
			RGBW60	RGBW (6000K)				

Example:

WL75G-PIX-AC-GR-C-20-1000-8P-AGB-100-RGBW40-IP66-DMX

WL75 Grazer Profile, Pixel Control, 220-240V AC, Matt Grey, Clear cover, 20°, 1000mm, 8 Pixels, Anti-glare Baffle, 100W/m, RGBW(4000K), IP66, DMX512



# LINEAR PROFILE AND ACCESSORIES

(Ordering Matrix for Separate Orders)

## • Terminal Cable

Power supply or signal for male/female terminal of lighting fixture with controller

Type	Number of Cores		Length	
WL-C	2P	2 poles (On/Off)	220	220mm
	5P	5 poles (TW/RGBW/DMX)	1000	1000mm

example: WL-C.5P.1000

## • Inter-connector Cable

Used in power supply or signal jumper connection for lighting fixture

Type	Number of Cores		Length	
WL-IC	2P	2 poles (On/Off)	1000	1000mm
	5P	5 poles (TW/RGBW/DMX)		

example: WL-IC.5P.1000

## • T-connection Cable

Cable used in intermediate power supply for lighting fixture with controller

Type	Number of Cores		Length	
WL-TC	2P	2 poles (On/Off)	300	300mm
	5P	5 poles (TW/RGBW/DMX)	600	600mm

example: WL-TC.5P.600

## • Termination End Cap

Cable used in intermediate power supply for lighting fixture with controller

Type	Number of Cores	
WL-EC	2P	2 poles (On/Off)
	5P	5 poles (TW/RGBW/DMX)

example: WL-EC.5P