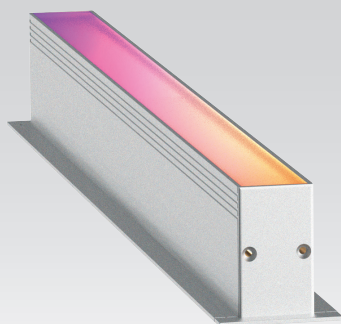




WP25F

PRESSURE PROOF 20 PIXELS PER METER
PIXEL CONTROL LINEAR LUMINAIRE



AVAILABLE OPTIONS

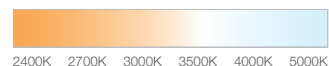
COLOUR OPTIONS

SILVER ANODIZED



CCT OPTIONS

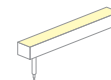
SINGLE CCT



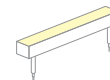
RGBW



WIRE END & EXIT CONFIGURATIONS OPTIONS

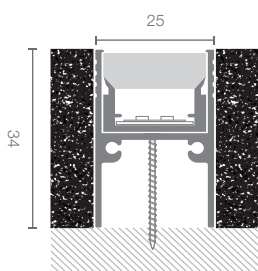


Single Wire End,
Rear Exit

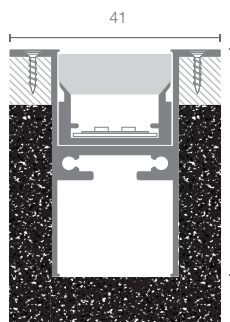


Double Wire End,
Rear Exit

DIMENSIONS (MM)

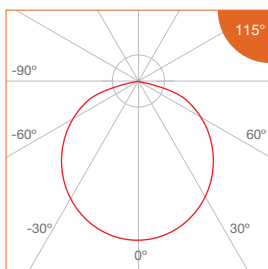


Recessed Trimless



Recessed Trim

PHOTOMETRICS





Pressure Proof Luminaire_Facade Lighting

Profile Type	24.9mm width aluminium linear profile
Profile Finishing	Silver Anodised
Cover	Diffused
Light Uniformity	Dot-less
Mounting	Recessed Trim, Recessed Trimless
Beam Angle	115°
Power Options	Single CCT - 15W/m, 10W/m, 5W/m RGBW - 15W/m, 10W/m, 5W/m
CRI	ProART (CRI~95) *Ra>90, R9>50
SDCM	3 step MacAdam ellipse binning
Lifetime	Up to 50,000 hours L80 lamp life at Ta = 25°C
Voltage	24V DC
Length Options	CCT: 508mm, 1008mm, 1508mm, 2008mm RGBW: 512mm, 1012mm, 1512mm, 2012mm
Operating Temperature	Ta (min) = -20°C, Ta (max) = +50°C
Wire Connection	Supplied with insulated IP67 wires and connector at 200mm length
IP Rating	IP67
IK Rating	IK10 (Can withstand 5kg of free fall object dropping from 0.4m height)
Profile LOR	50% (Frosted diffuser)

Media Specifications

Pixel Density	CCT: 20 Pixel per meter RGBW: 12 Pixel per meter
Control Method	DMX 512 - Pixel by Pixel
Cut per Stretch	CCT: 500mm (10 pixels), 1000mm (20 pixels), 1500mm (30 pixels), 2000mm (40 pixels) RGBW: 500mm (6 pixels), 1000mm (12 pixels), 1500mm (18 pixels), 2000mm (24 pixels)
Colour Temperature	2400K, 2700K, 3000K, 3500K, 4000K, 5000K RGBW(3000K), RGBW(6000K)

SPECIFICATIONS

• Single CCT

CCT	Efficacy (lm/W)	Luminous Flux per meter (lm/m)		
		15W/m	10W/m	5W/m
2400K	45.6	684	458	226
2700K	53.0	795	533	262
3000K				
3500K				
4000K	55.7	835	559	275
5000K				
Correction Factor		1.00	0.67	0.33

• RGBW

CCT	Efficacy (lm/W)	Luminous Flux per meter (lm/m)			RGB Wavelength (nm) / White CCT
		15W/m/Ch	10W/m/Ch	5W/m/Ch	
Red	25.0	63	42	21	620 - 630
		(@2.52W)	(@1.68W)	(@0.84W)	
Green	38.1	136	91	45	515 - 525
		(@3.57W)	(@2.38W)	(@1.19W)	
Blue	10.1	36	24	12	460 - 470
		(@3.57W)	(@2.38W)	(@1.19W)	
White	59.2	316	212	104	3000K 6000K
		(@5.34W)	(@3.56W)	(@1.78W)	
Correction Factor		1.00	0.67	0.33	

ORDERING MATRIX

Profile	Finishing		Mounting		Cover		Length		LED Module Power & CCT				Wire End & Exit Configuration		Ingress Protection				
	SL	Silver Anodised	T	Trim	D	Diffused	508	508mm	15	15W/m	24	2400K	SR	Single Wire End, Rear Exit	IP67	IP67			
WP25F-20PIX	SL	Silver Anodised	T	Trim	D	Diffused	1008	1008mm	Single CCT	10	10W/m	27	2700K	DR	Double Wire End, Rear Exit				
								1508		1508mm	5	5W/m	30					3000K	
								2008		2008mm			35					3500K	
													40					4000K	
													50					5000K	
			1012	1012mm	X	Trimless	D	Diffused	2012	2012mm	RGBW	15	15W/m	RGBW30	RGBW(3000K)				
										10		10W/m	RGBW60	RGBW(6000K)					
										5		5W/m							

Example: WP25F-20PIX-SL-X-D-1008-5-30-SR-IP67

WP25F Profile, Pixel Control, 20 Pixels per meter, Silver Anodised, Trimless, Diffused cover, 1008mm, with FM6 - 5W/m, 3000K, Single Wire End at Rear Exit, IP67, Including 2 x End Cap