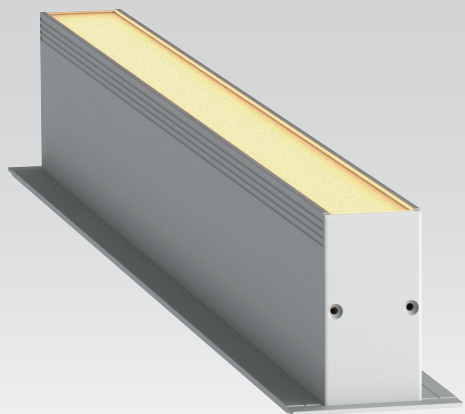




# WP30F IP67 IK10

## PRESSURE PROOF LINEAR LUMINAIRE



### AVAILABLE OPTIONS

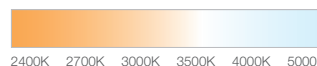
#### COLOUR OPTIONS

SILVER ANODIZED

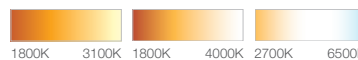


#### CCT OPTIONS

SINGLE CCT



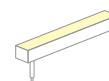
tuneWHITE



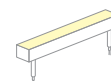
RGBW



#### WIRE END & EXIT CONFIGURATIONS OPTIONS



Single Wire End, Rear Exit



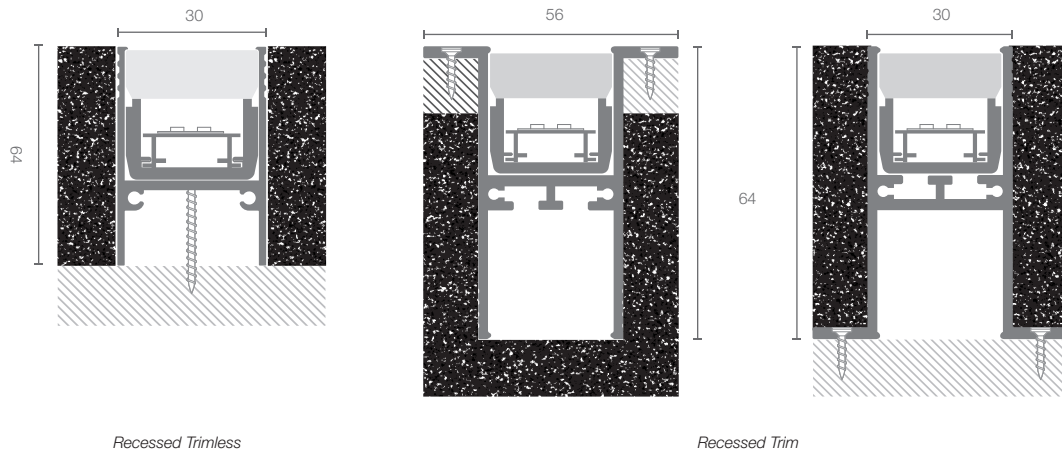
Double Wire End, Rear Exit



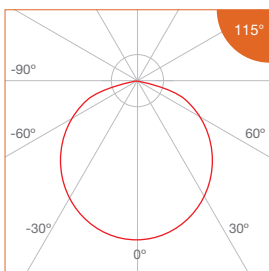
## Pressure Proof Luminaire\_Facade Lighting

Profile Type	30.6mm width aluminium linear profile
Profile Finishing	Silver Anodised
Cover	Diffused
Light Uniformity	Dot-less
Mounting	Recessed Trim, Recessed Trimless
Beam Angle	115°
Power Options	Single CCT - 20W/m, 15W/m, 10W/m, 5W/m tuneWHITE - 15W/m per Channel, 10W/m per Channel, 5W/m per Channel RGBW - 20W/m, 15W/m, 10W/m, 5W/m
CRI	ProART (CRI~95) *Ra>90, R9>50
SDCM	3 step MacAdam ellipse binning
Lifetime	Up to 50,000 hours L80 lamp life at Ta = 25°C
Voltage	24V DC
Length Options	CCT: 508mm, 1008mm, 1508mm, 2008mm TW/RGBW: 512mm, 1012mm, 1512mm, 2012mm
Operating Temperature	Ta (min) = -20°C, Ta (max) = +50°C
Wire Connection	Supplied with insulated IP67 wires and connector at 200mm length
IP Rating	IP67
IK Rating	IK10 (Can withstand 5kg of free fall object dropping from 0.4m height)
Profile LOR	47% (Frosted diffuser)

### DIMENSIONS (MM)



### PHOTOMETRICS





Pressure Proof Luminaire\_Facade Lighting

SPECIFICATIONS

• Single CCT

CCT	Efficacy (lm/W)	Luminous Flux per meter (lm/m)			
		20W/m	15W/m	10W/m	5W/m
2400K	42.8	857	642	428	214
2700K					
3000K					
3500K	49.8	996	747	498	249
4000K					
5000K					
Correction Factor		1.00	0.75	0.50	0.25

• tuneWHITE 1800K - 3100K

CCT	Efficacy (lm/W)	Luminous Flux per meter (lm/m)		
		15W/m/Ch	10W/m/Ch	5W/m/Ch
1800K	37.8	568	380	187
3100K	49.8	747	500	247
Correction Factor		1.00	0.67	0.33

• tuneWHITE 1800K - 4000K

CCT	Efficacy (lm/W)	Luminous Flux per meter (lm/m)		
		15W/m/Ch	10W/m/Ch	5W/m/Ch
1800K	37.8	568	380	187
4000K	52.3	784	525	259
Correction Factor		1.00	0.67	0.33

• tuneWHITE 2700K - 6500K

CCT	Efficacy (lm/W)	Luminous Flux per meter (lm/m)		
		15W/m/Ch	10W/m/Ch	5W/m/Ch
2700K	49.8	747	500	247
6500K	52.3	784	526	259
Correction Factor		1.00	0.67	0.33

• RGBW

CCT	Efficacy (lm/W)	Luminous Flux per meter (lm/m)				RGB Wavelength (nm) / White CCT
		20W/m/Ch	15W/m/Ch	10W/m/Ch	5W/m/Ch	
Red	23.5	79	59	40	20	620 - 630
		(@3.36W)	(@2.52W)	(@1.68W)	(@0.84W)	
Green	35.7	170	128	85	43	515 - 525
		(@4.76W)	(@3.57W)	(@2.38W)	(@1.19W)	
Blue	9.5	45	34	23	11	460 - 470
		(@4.76W)	(@3.57W)	(@2.38W)	(@1.19W)	
White	55.6	396	297	198	99	3000K 6000K
		(@7.12W)	(@5.34W)	(@3.56W)	(@1.78W)	
Correction Factor		1.00	0.75	0.50	0.25	



Pressure Proof Luminaire\_Facade Lighting

ORDERING MATRIX

Profile	Finishing		Mounting		Cover		Length		LED Module Power & CCT				Wire End & Exit Configuration		Ingress Protection						
WP30F	SL	Silver Anodised	T	Trim	D	Diffused	508	508mm	Single CCT	20	20W/m	24	2400K	SR	Single Wire End, Rear Exit	IP67	IP67				
				Trimless			1008	1008mm		15	15W/m	27	2700K					DR	Double Wire End, Rear Exit		
				1508			1508mm	10		10W/m	30	3000K									
							2008	2008mm		5	5W/m	35			3500K						
											40	4000K									
											50	5000K									
							512	512mm	tuneWHITE	15PC	15W/m/Ch	TW1831	tuneWHITE 1800K-3100K								
							1012	1012mm		10PC	10W/m/Ch	TW1840	tuneWHITE 1800K-4000K								
							1512	1512mm		5PC	5W/m/Ch	TW2765	tuneWHITE 2700K-6500K								
							2012	2012mm													
													RGBW	20	20W/m			RGBW30	RGBW(3000K)		
														15	15W/m			RGBW60	RGBW(6000K)		
														10	10W/m						
														5	5W/m						

Example: WP30F-SL-X-D-1008-5-30-SR-IP67  
 WP30F Profile, Silver Anodised, Trimless, Diffused cover, 1008mm, with FM6 - 5W/m, 3000K, Single Wire End at Rear Exit, IP67, Including 2 x End Cap