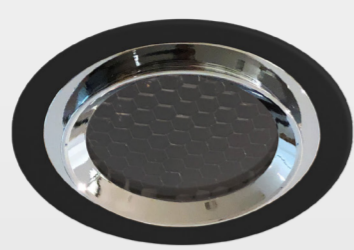


Brilliant Showcase Illumination

NEW

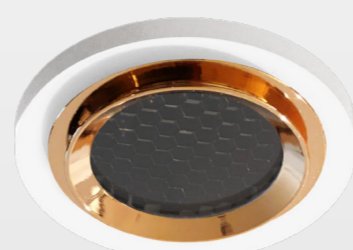
COIN 24CV SEMI RECESSED

Semi Recessed Mounted Puck Light



COIN 24CV RECESSED

Recessed Mounted Puck Light



COIN 24CV SURFACE

Surface Mounted Puck Light

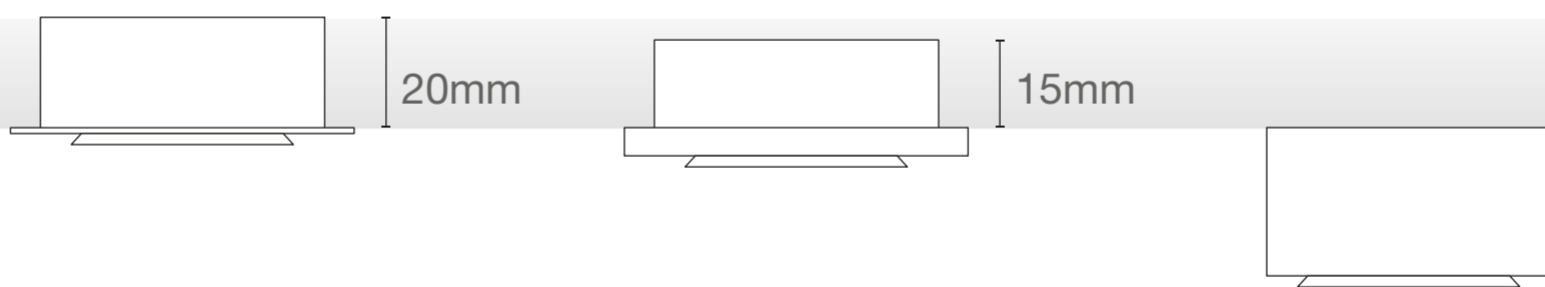


A series of LED module hybrid luminaires derived from ELR Coin low height LED module operating on 24V DC constant voltage that allows multiple luminaires to be driven by a single non-dim or phase / 0-10V / DALI / DMX dimmable driver.

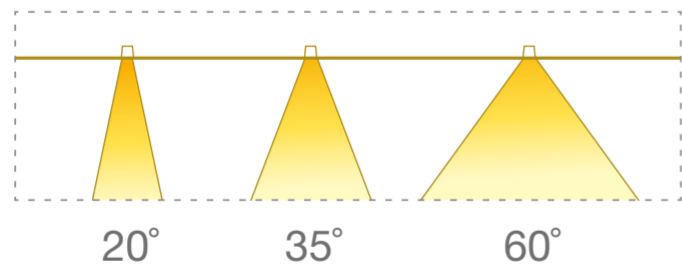
Coin 24CV puck lights are equipped with built-in ATePS technology to protect LED lifetime against abnormally high ambient temperature conditions and are developed without electronic capacitors to be highly durable, perfect for display shelves whereby maintenance can be difficult.

With high colour rendition in ProART CRI~95 and various finishing colour combinations, Coin 24CV puck lights are designed to enhance your showcase items and make them look brilliant.

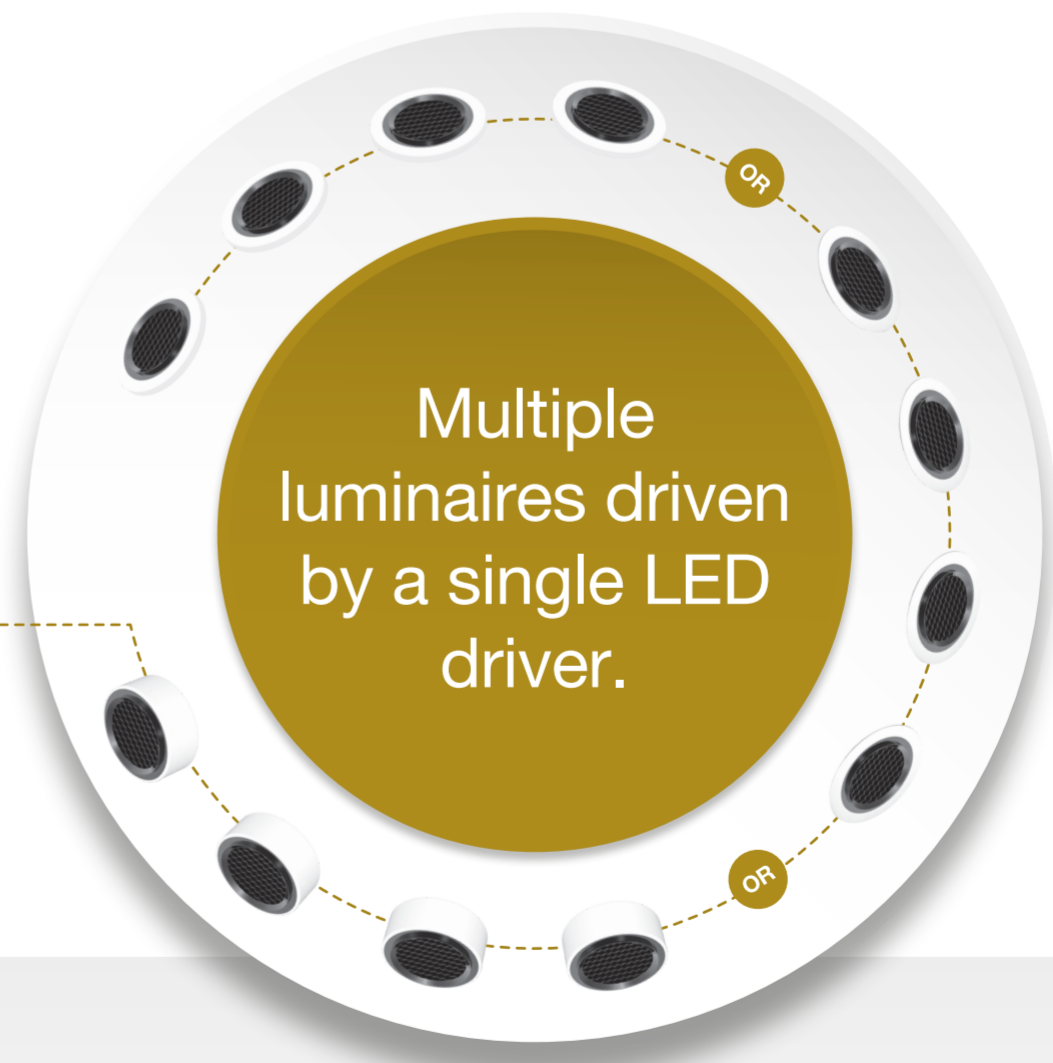
Variations **Recessed** **Semi Recessed** **Surface**
 H23 x Ø60 (mm) H23 x Ø60 (mm) H28 x Ø50 (mm)



Lumen Output 155lm	Lumen Output 349lm
LED Power 2W	LED Power 4.5W



24V DC Constant Voltage
 Non-dim or Phase / 0-10V /
 DALI / DMX Dimmable LED Driver



Excellent cost savings. Quicker ROI. Quick installation. Low maintenance.



Converging optical lens maximising LOR



Built-in with Advanced Thermal Protection System



Colour Rendition CRI~95

FIND OUT MORE